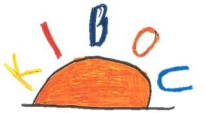


Social Welfare Corporation *SEN-NEN MURA*

TABUNKA room

多文化ルーム **KIBOU**



KIBOU is a classroom supporting foreign people between the ages of 5 and 18 living in Nishio City. We support children who are not in school, nursery school, or kindergarten, elementary or junior high school students who want to study Japanese, and people who are over 15 years old and want to study Japanese for going to school. We also have Native and Inherited Language Classes

(for Chinese, Portuguese, Vietnamese and Spanish).

Teachers have completed a Japanese language teaching course or have a teacher's license.



We continue to sanitize stationery, desks, and other shared items.



Foreign Language Support

(We can assist you in reading school newsletters or filling up school documents. However, we cannot help with official documents or medical documents.)



Portuguese (Tue. – Sat.)



Indonesian (Tue.-Fri & Sun.)



Filipino (Sun.)



Vietnamese (Tue. – Sat.)



Spanish (Tue. – Sat.)



Chinese (Tue. – Sat.)



Easy Japanese (Tue. – Sun.)

**TABUNKA Room
KIBOU**

Acty Nishio 3rd Floor



Social Welfare Corporation *SEN-NEN MURA*

社会福祉法人せんねん村

TABUNKA Room

多文化ルーム **KIBOU**

〒445-0837

Aichi-ken Nishio-shi Tsurugasaki-cho 愛知県西尾市鶴ヶ崎町6-2 Acty Nishio floor

TEL : (0563) 77- 7457

FAX : (0563) 77- 0046

☎ : 070-1295-4734 (KIBOU)

☎ : 090-9153-5915 (Isshiki and Ogiwara classes only)

✉ : tabunka.room.kibou.2014@gmail.com

Blog : <https://tabunkakibou.wordpress.com/>

Facebook/Messenger➡



KIBOU business hours :

Tue・Wed・Thu・Fri 9:30-19:30

Saturday 9:00-16:30

Sunday 9:00-16:00

※The building is closed on Mondays



Classes in TABUNKA Room KIBOU

There are classes for elementary・junior high students in ISSHIKI on Tuesday/Thursday KIRA class are on Fridays

※People studying in KIBOU must apply in the accident insurance, which is 200 yen each person, per year.

	FUSHUEN class A class for 5 years of age who are not enrolled in the final year of kindergarten	FUSHUGAKU class A class for children 6 to 15 years of age who are not enrolled in school	KANENREI class A class for children 15 to 18 years of age who are not enrolled in school	SHOGAKUSEI class A class for students enrolled in Elementary School	CHUGAKUSEI class A class for students enrolled in Junior High School
Day of the week	Tuesday to Thursday	Tuesday to Thursday	Tuesday to Thursday	Tuesday to Friday	Tuesday to Friday
Time	9:30-12:00	9:30-12:00	9:30-12:00 or 13:00-15:00 Can choose Morning class or Afternoon class	16:00~17:30 Twice a week, for 30 minutes Can choose the day of the week and time.	18:00~19:30 Once or twice a week Class is divided by level of Japanese language study and grade level.
Class Activities	Aid in practicing a healthy lifestyle, Japanese studies, and Fun activities	Home visits and interview. Aid in establishing a healthy lifestyle. Japanese studies. Support for enrolling to school.	Japanese language study in accordance with the child's goals (higher education / enrolling to school)	Japanese language study using KIBOU books and school textbooks	Japanese language study. School preparation and review. Preparation for High School entrance
Study Expenses	100yen / 1time for a snack	None (Only pay insurance fees)	1,000 yen / month (Insurance fee included)	500 yen / month (Insurance fee included)	500 yen / month (Insurance fee included)
Transport	None	None	None	None	None
How to apply	Fill in the application form + Insurance fee + 100 yen for snack fee	Fill in the application form + 200 yen for Insurance fee	Fill in the application form + 1,000 yen	Fill in the application form + 500 yen	Fill in the application form + 500 yen

●Native Language (Heritage Language) Classes

Time	Class	Study Expenses	How to apply
Saturday Morning	Portuguese for Children	2,000 yen / month (Insurance fee included)	Fill in the application form + Monthly study expenses (Insurance fee included)
	Chinese for Children	2,000 yen / month (Insurance fee included)	
	Vietnamese for Children	2,000 yen / month (Insurance fee included)	
	Spanish for Children	2,000 yen / month (Insurance fee included)	

●Weekend Classes

Time	Class	Study Expenses	How to apply
Saturday・Afternoon	Reading class	500 yen / month (Insurance fee included)	Fill in the application form + Monthly study expenses (Insurance fee included)
<u>Class will start in the Autumn!</u>	Parent-child preschool for the final year of kindergarten/nursery (5 years old)	Only Insurance fee	Fill in the application form + 200 yen for Insurance fee
Sunday 10:00-11:00	Japanese class for adults	500 yen / 1 term (4-term system) (Insurance fee included)	Fill in the application form + 500yen + Japanese language level check

Have you given up on enrolling to a Japanese High



- ? I'm already an adult, so I can't go to High School from now, can I?
 - ➡ Age is no barrier to enrolling to school.
- ? Aren't the uniforms expensive?
 - ➡ There are schools that don't require uniforms.
- ? I didn't graduate from a Japanese junior high school, so I cannot go to Japanese high school.
 - ➡ As long as you finished 9 years of education in your home country, you can take the Japanese high school entrance examination.
- ? What are the benefits of going to high school?
 - ➡ There are plenty of benefits. Graduating from high school will give you more options in future careers. Also, there are many companies that require a high school diploma or higher.
- ? My parent told me to work, so I don't have time to go to school.
 - ➡ There are schools that you can attend while you work or have a part-time job.



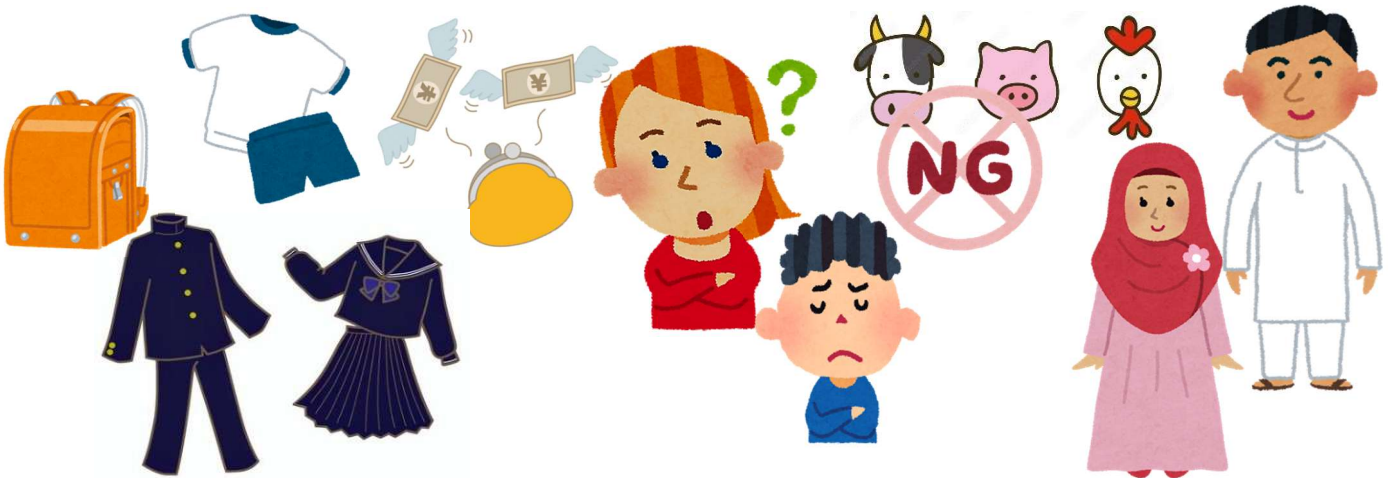
【KANENREI class】

Tuesday - Thursday 9:30~12:00 / 13:00~15:00

※You can choose morning class or afternoon class.

You can join anytime if there are available seats. (April, 2025~March, 2026)

We have a class for children between the ages 5 to 15 who are not enrolled in Kindergarten/Nursery or School



Isn't there a child who is not enrolling a Kindergarten/Nursery school or Elementary/Junior high school for any of the following reasons?

《Reasons for not enrolling in Kindergarten/Nursery School, even though the child is turning 6 this year》

- ★The parent stays at home all the time, so there is no need to go to Kindergarten/Nursery.
- ★It costs money to go to Kindergarten/Nursery School.
- ★Have not yet decided whether to enroll in a foreign school or a Japanese elementary school.

《Reasons for not enrolling in Elementary or Junior High School》

- ★Cannot let the child attend school because worried that does not understand Japanese.
- ★Used to go to school but stopped. There is nowhere to go.
- ★For religious reasons, worry about sending the child to Japanese school, where routines, habits, and behaviors are different from those in the home country.
- ★Didn't attend to school in home country, never had a problem with not going to school.



【FUSHUEN and FUSHUGAKU class】

Tuesday – Thursday 9:30~12:00

※ You can join any time. (April, 2025~March, 2026)